

177 BERRIMA RD, MOSS VALE

DEVELOPMENT APPLICATION

DWG NO	DRAWING TITLE	SCALE
LA01	COVER SHEET	N/A
LA02	LANDSCAPE PLAN	1:250
LA04	PLANTING CHARACTER	N/A
LA05	LANDSCAPE DETAILS	As shown



OVERHEAD ELECTRICAL LINE

BERRIMA ROAD

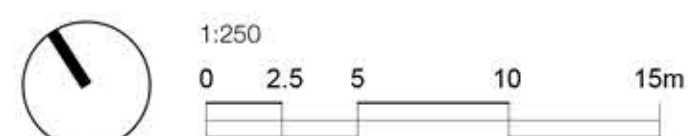
BOWMAN ROAD



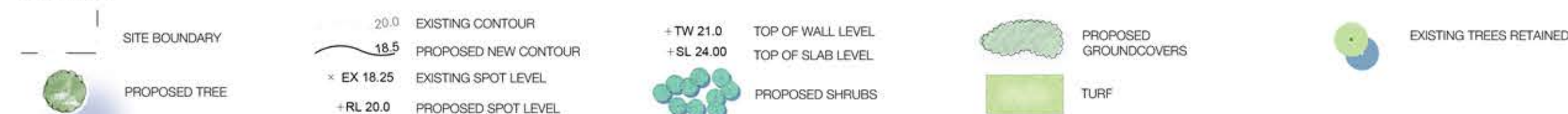
WINGECARRIBEE
COMMUNITY
RECYCLING
CENTRE

LOT 6
DP1249526

LANDSCAPE PLAN



LEGEND



project: Wingecarribee Animal Shelter and SES
client: Figgis Jefferson Tapa
date: 27.05.2022
revision: C
drawn: RS
checked: AL

TaylorBrammer
TAYLOR BRAMMER LANDSCAPE ARCHITECTS PTY LTD
SYDNEY STUDIO
215 Oxford Street Woolahra, NSW, 2025 E: sydney@taylorbrammer.com.au T: 61 2 9387 8855
Copyright of Taylor Brammer Landscape Architects Pty Ltd. ABN 61 098 724 988

TREES



Eucalyptus pauciflora Snow gum



Eucalyptus pauciflora Snow gum



Eucalyptus amplifolia Cabbage gum



Eucalyptus amplifolia Cabbage gum

SHRUBS



Daviesia ulicifolia Bitter pea



Daviesia ulicifolia Bitter pea



Melaleuca thymifolia Honey myrtle



Melaleuca thymifolia Honey myrtle

GROUND COVERS



Dianella caerulea Wandering lily



Austrodanthoia caespitosa Wallaby grass



Microlaena stipoides Weeping grass



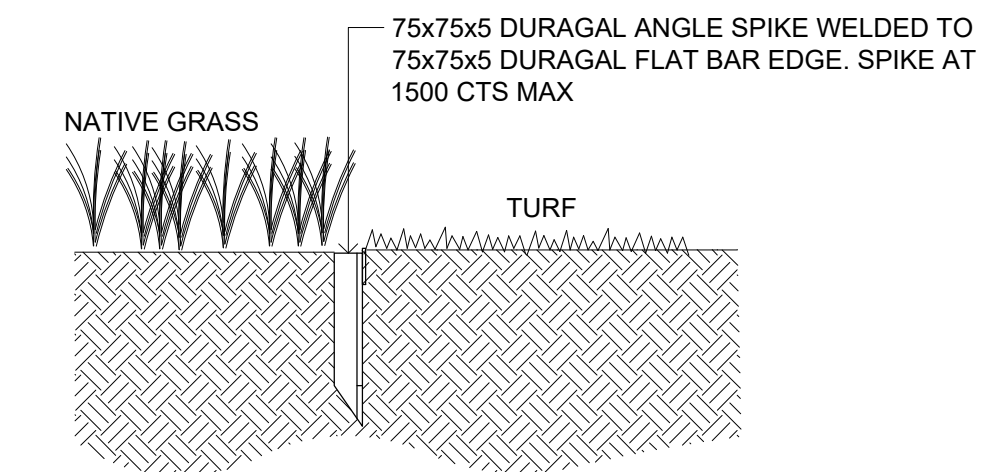
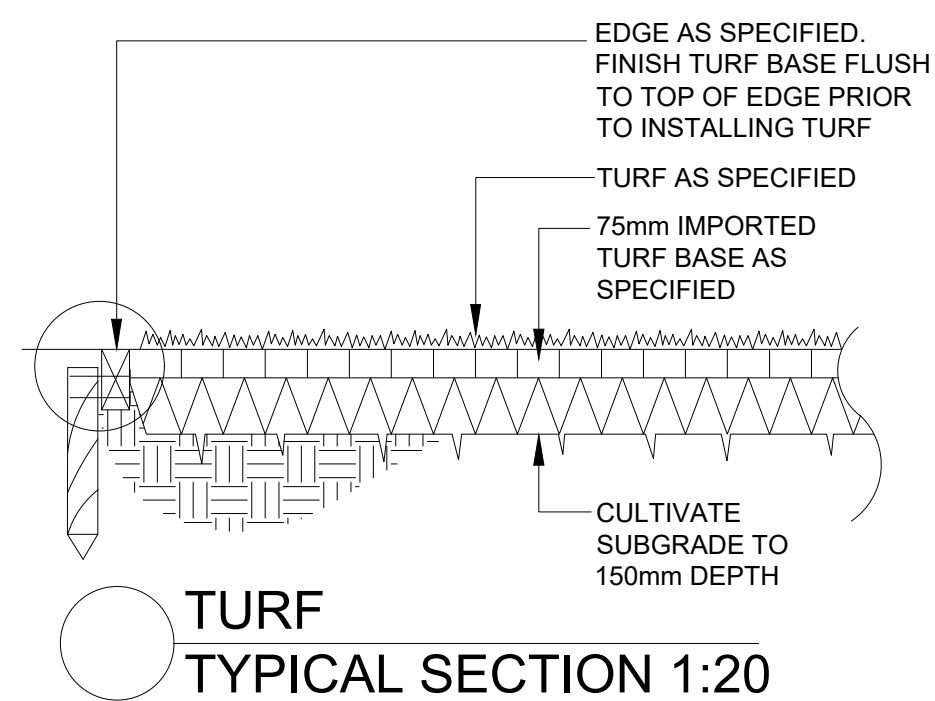
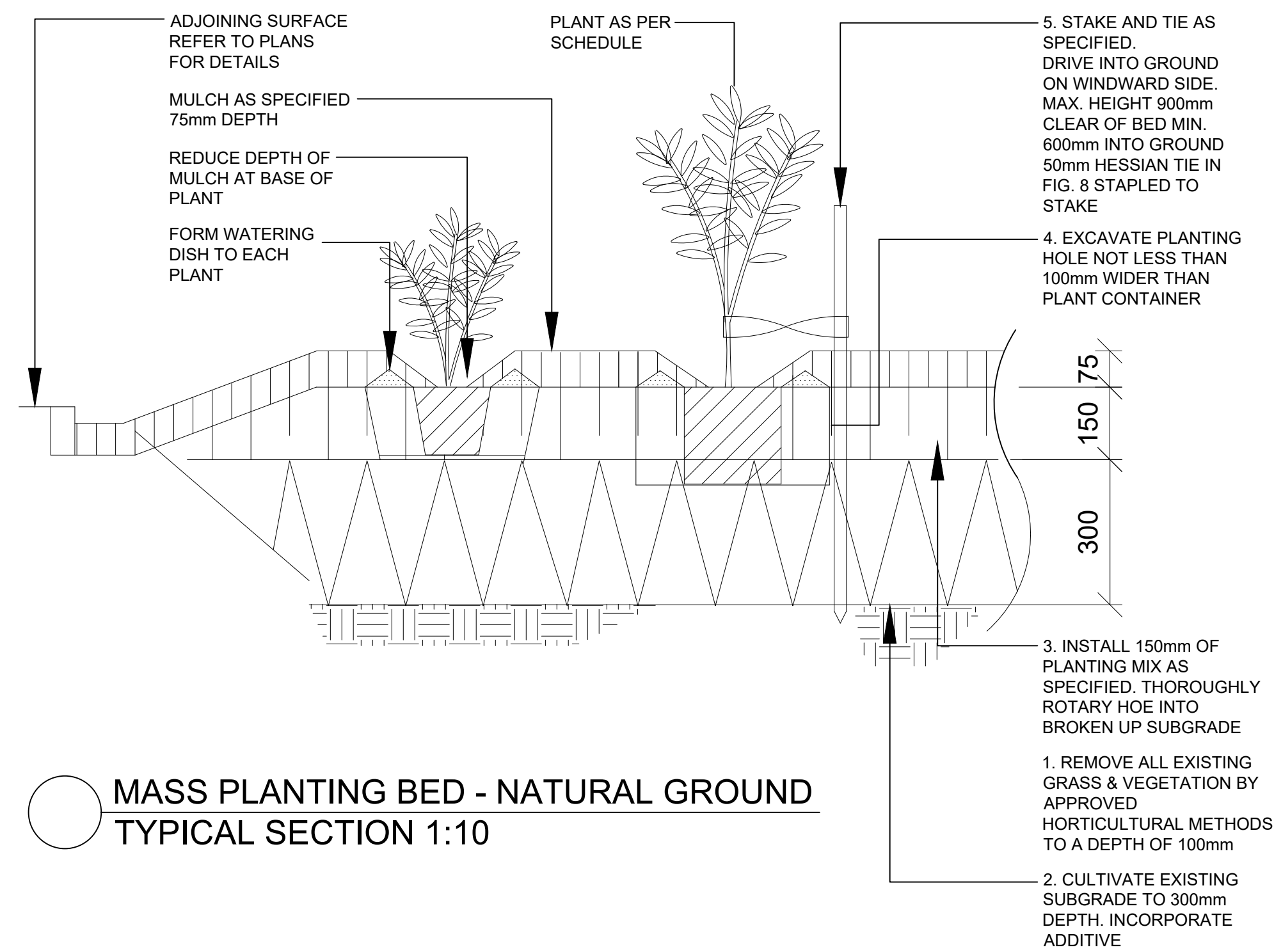
Themeda australis Kangaroo grass

PLANT SCHEDULE

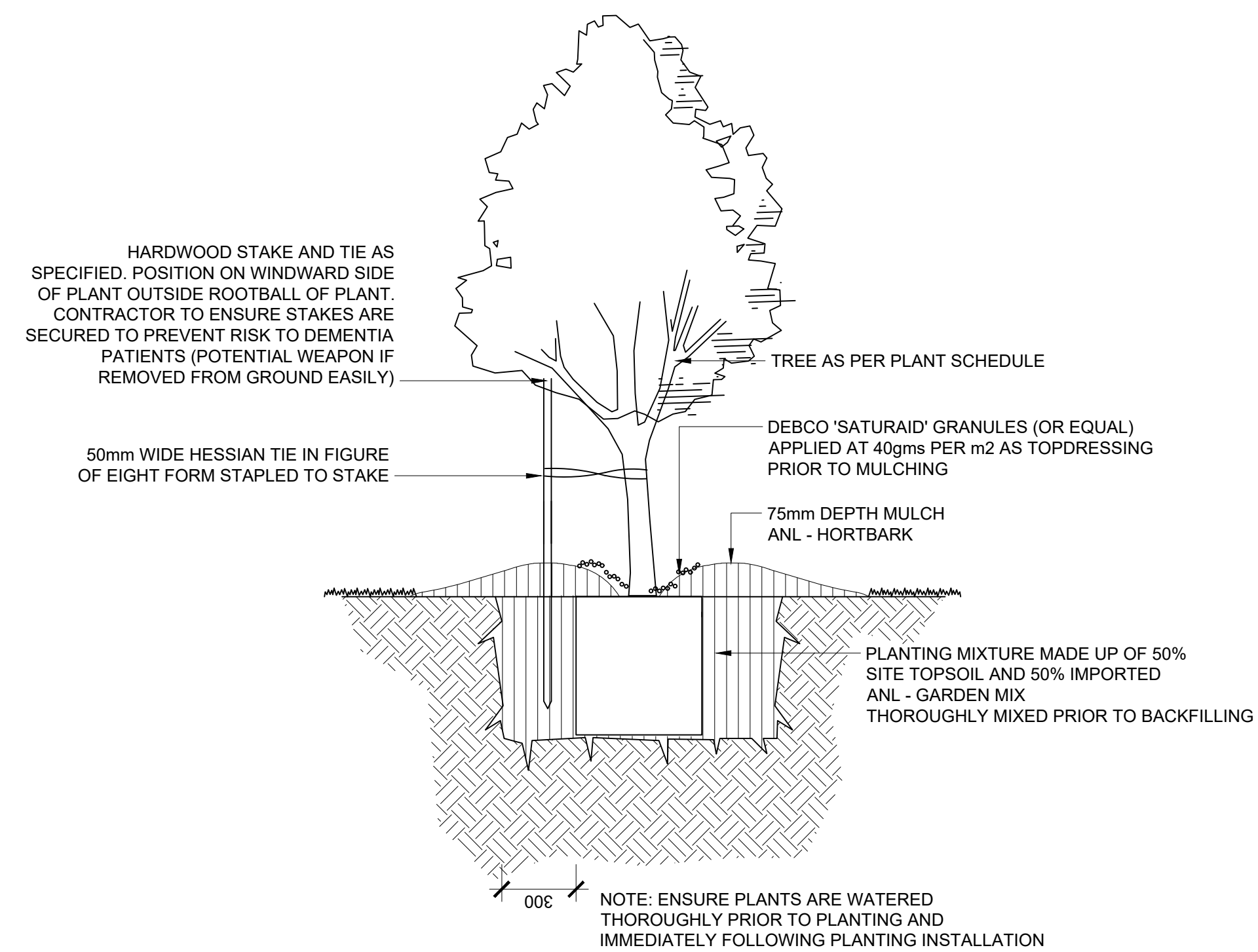
ID	BOTANICAL NAME	COMMON NAME	HEIGHT (m)	POT SIZE	QTY
TREES					
EA	<i>Eucalyptus amplifolia</i>	Cabbage gum	20	300mm	8
EP	<i>Eucalyptus pauciflora</i>	Snow gum	12	300mm	6
SHRUBS					
BS	<i>Banksia spinulosa</i>	Hairpin banksia	2	140mm	24
DU	<i>Daviesia ulicifolia</i>	Bitter pea	1	140mm	24
MT	<i>Melaleuca thymifolia</i>	Honey myrtle	1	140mm	24
OM	<i>Olearia microphylla</i>	Small leafed daisy bush	1	140mm	25
GROUNDCOVERS					
AC	<i>Austrodanthoia caespitosa</i>	Wallaby grass	0.5	Tube	852
MS	<i>Microlaena stipoides</i>	Weeping grass	0.6	Tube	852
PP	<i>Pandorea pandorana</i>	Wonga Wonga vine	-	Tube	852
TA	<i>Themeda australis</i>	Kangaroo grass	1	Tube	852

Note, the above species are representative of the EEC Southern Highlands Shale Forest vegetation community as identified by NSW OEH

PLANTING CHARACTER



STEEL EDGE
TYPICAL SECTION 1:20



TREE PLANTING
TYPICAL SECTION 1:20

LANDSCAPE DETAILS

project: Wingecarribee Animal Shelter and SES
client: Figgis Jefferson Tepa
date: 20.05.2022
revision: B
drawn: RS
checked: AL

TaylorBrammer
TAYLOR BRAMMER LANDSCAPE ARCHITECTS PTY LTD
SYDNEY STUDIO
218 Oxford Street Woolahra, NSW, 2025 E sydney@taylorbrammer.com.au T 61 2 9387 8855
Copyright of Taylor Brammer Landscape Architects Pty Ltd. ABN 61 098 724 988